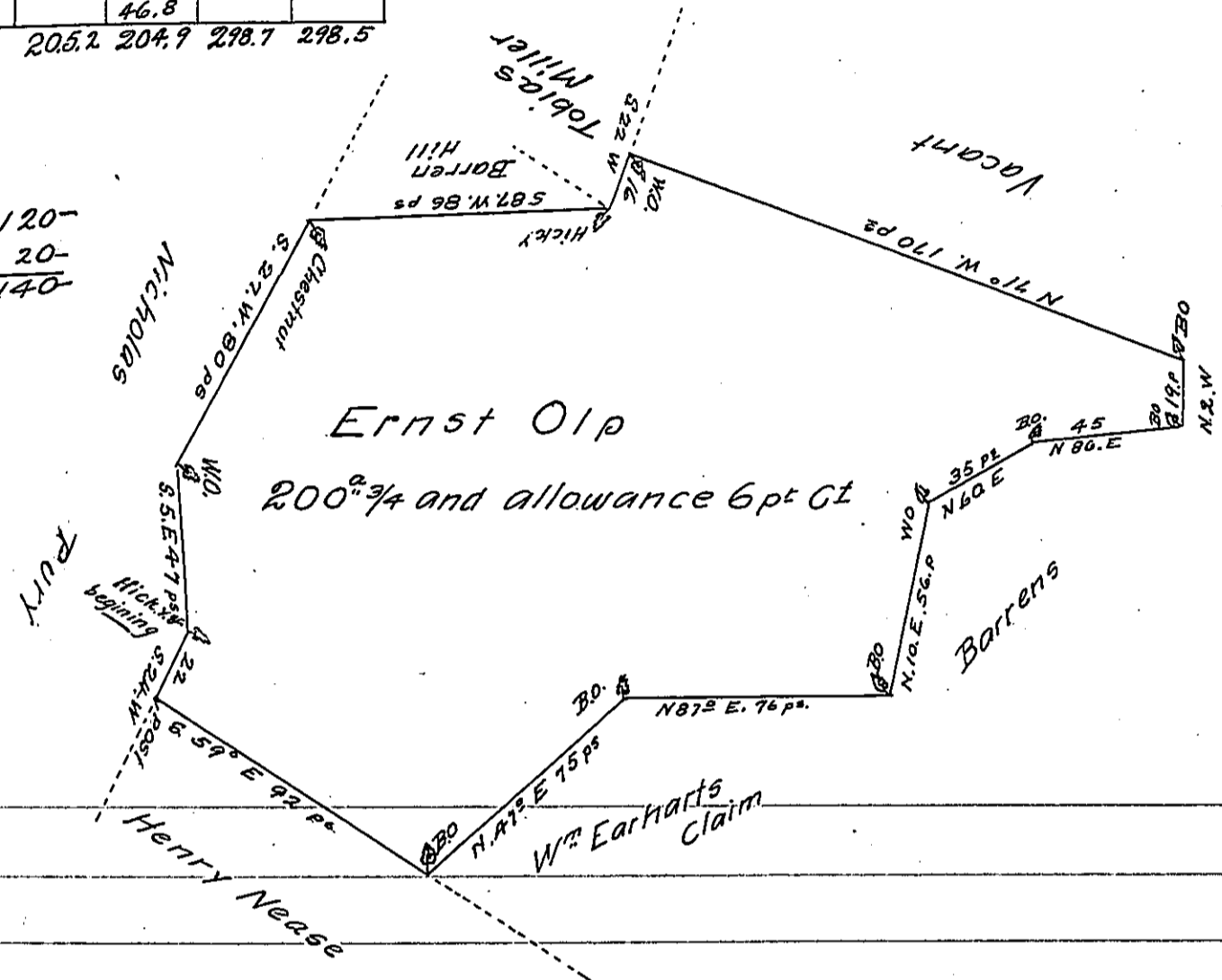


FORM No. 1.

N	Course	Dist.	North g	South g	East g	West g
1	S 24 W	22		20.1		
2	S 59 E	92		47.4	78.9	
3	N 47 E	75	51.1		54.9	
4	N 87 E	76	4.0		75.9	
5	N 10 E	56	55.1		9.7	
6	N 60 E	35	17.5		30.3	
7	N 86 E	45	3.1		44.9	
8	N 2 W	19	19.0			.7
9	N 71 W	70	55.4			160.7
10	S 22 W	16		14.8		6.0
11	S 87 W	86		4.5		85.9
12	S 27 W	80		71.3		36.3
13	S 5 E	47		46.8		
			205.2	204.9	298.7	298.5

200²⁵ 120-
14- 20-
214- 140-



A Draught of a tract of land situate in Shrewsberry township York County surveyed to Ernst Oip in pursuance of a Warrant from the Honourable Proprietaries for 200²⁵ dated the 9th day of June 1763. Surveyed the 15th of the 11th mo 1764

p^t W^m Matthews

To Jno Lukens
Surveyor Gen^l

IN TESTIMONY that the above is a copy of the original remaining on file in the Department of Internal Affairs of Pennsylvania, made conformably to an Act of Assembly approved the 16th day of February, 1833, I have hereunto set my Hand and caused the Seal of said Department to be affixed at Harrisburg, this twenty-fifth day of May 1906

Loac R Brown
Secretary of Internal Affairs.